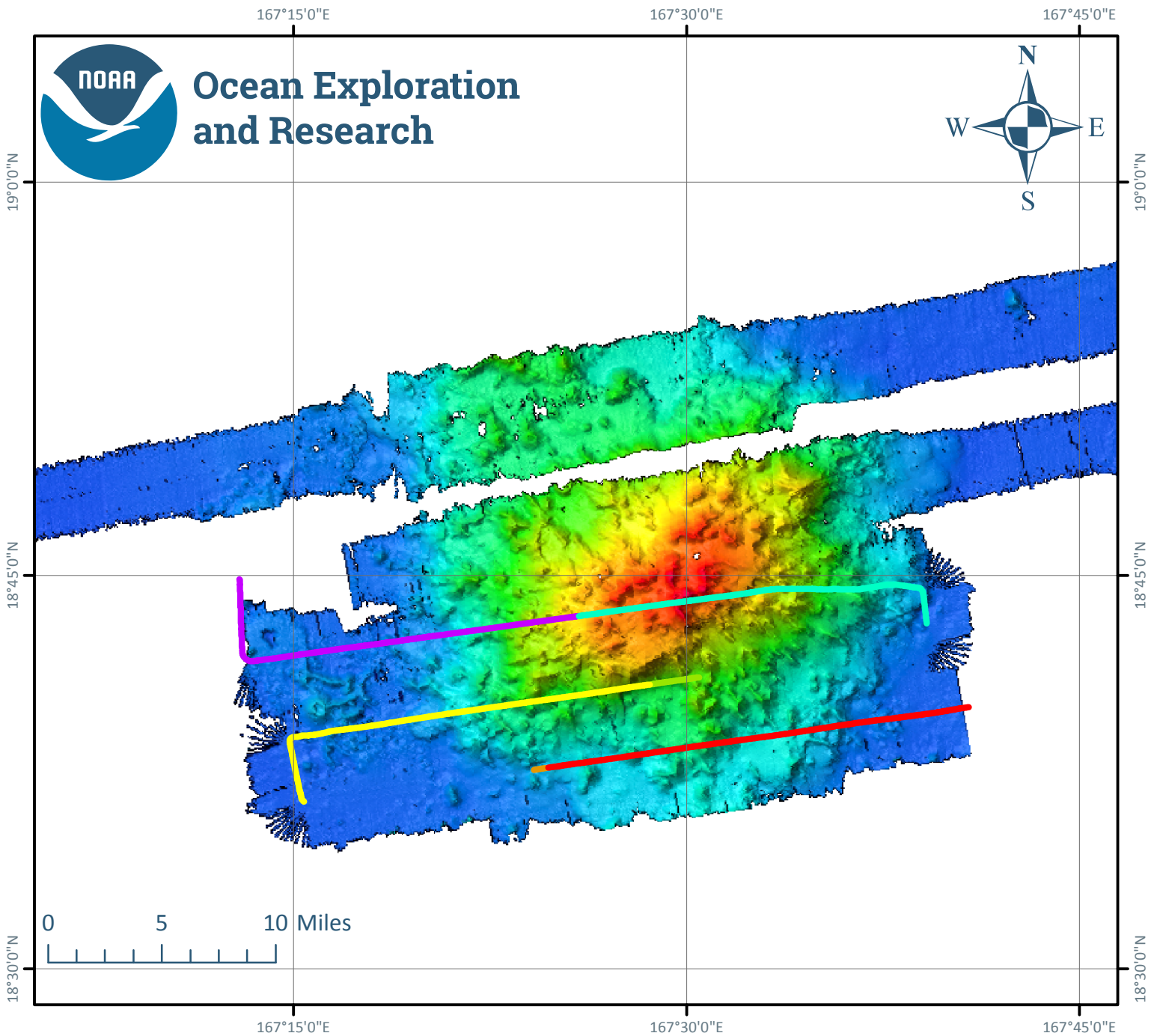
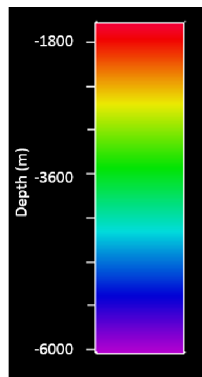


EX1607 NOAA Okeanos Explorer: CAPSTONE Wake Island Pacific Remote Islands Marine National Monument Seamount 4: Bathymetry

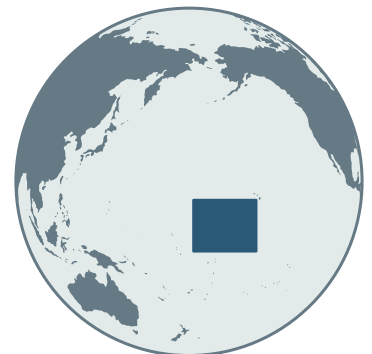


Legend

- EX1607_093_SBP
- EX1607_094_SBP
- EX1607_095_SBP
- EX1607_096_SBP
- EX1607_097_SBP
- EX1607_098_SBP



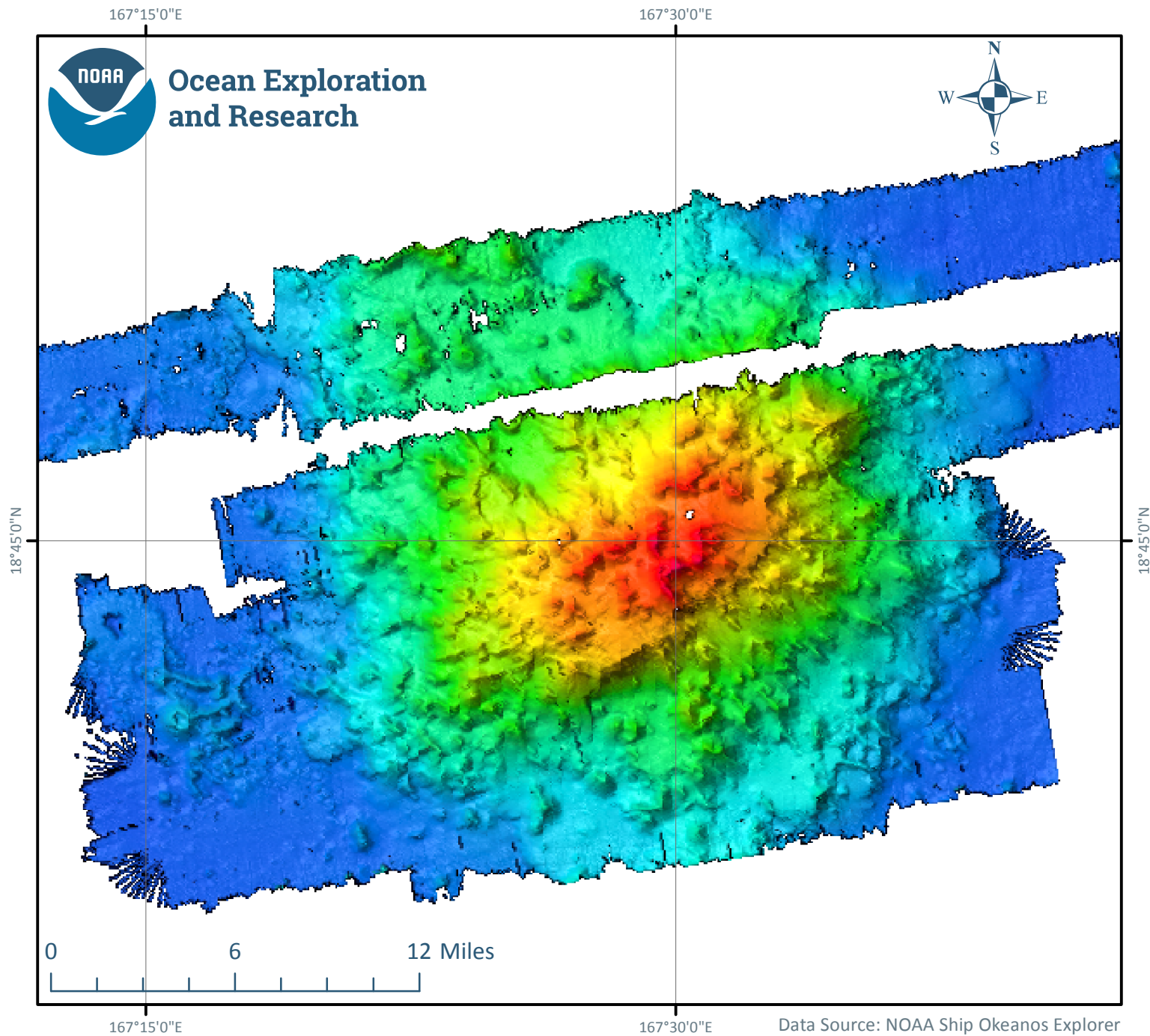
Data Source: NOAA Ship Okeanos Explorer
Map Compiled By: Chloe Baskin
Map Made In: ERSi ARC GIS



EX1607 NOAA Ship Okeanos Explorer: CAPSTONE

Wake Island Pacific Remote Islands Marine National Monument

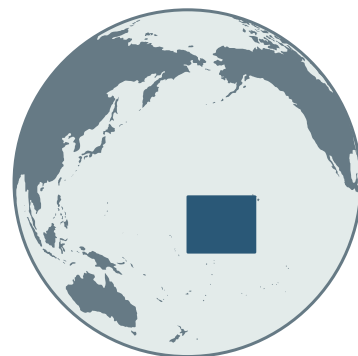
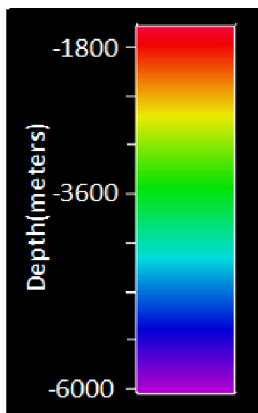
Seamount 4: Bathymetry



167°15'0"E

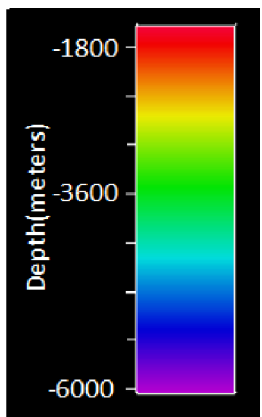
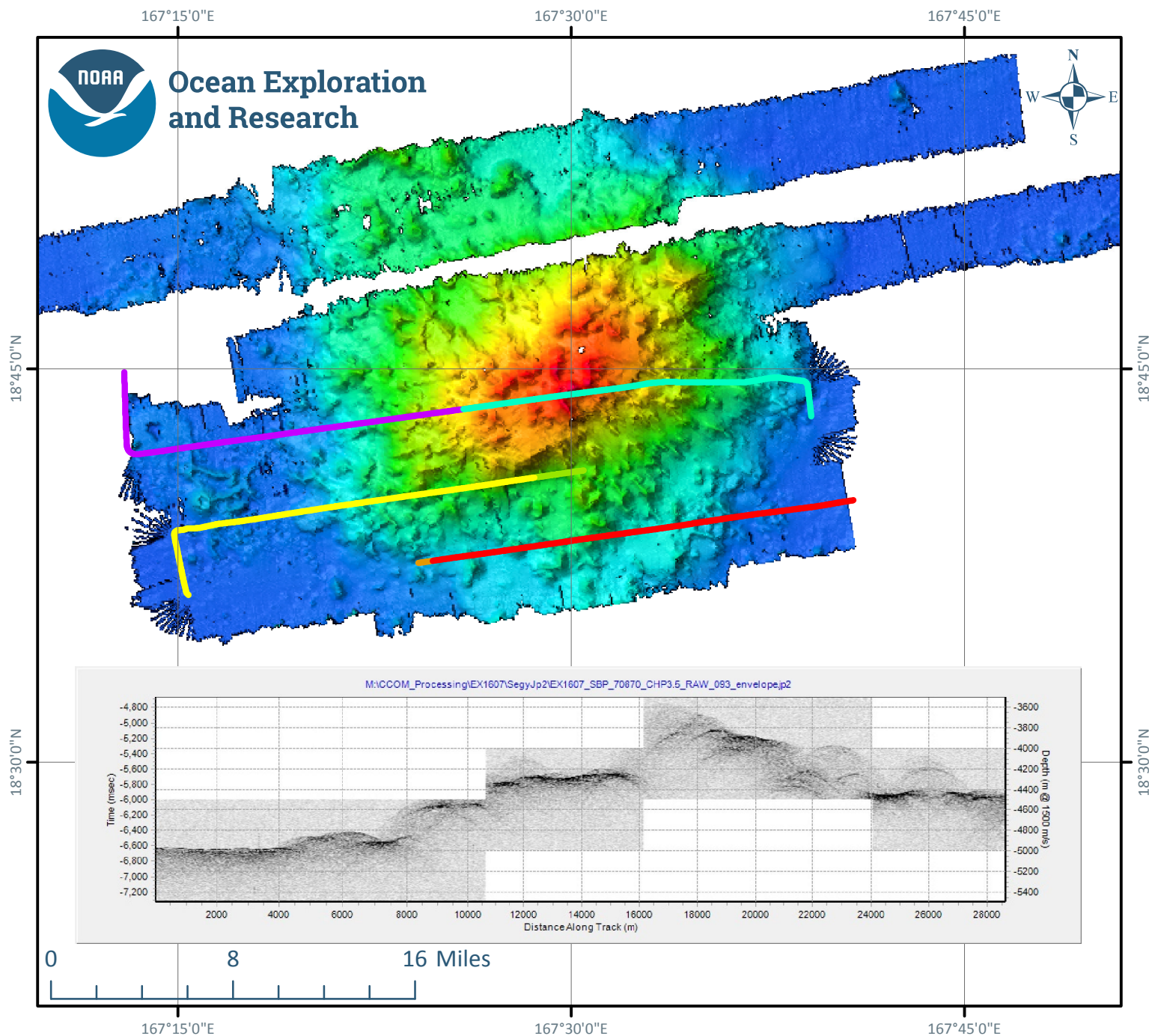
167°30'0"E

Data Source: NOAA Ship Okeanos Explorer
Map Compiled By Chloe Baskin
Map Made In : ERSi ARC GIS



EX1607 NOAA Ship Okeanos Explorer: CAPSTONE

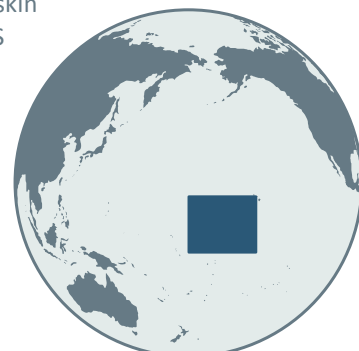
Wake Island Pacific Remote Islands Marine National Monument Seamount 4: Bathymetry and Sub-bottom Profiler Data



Legend

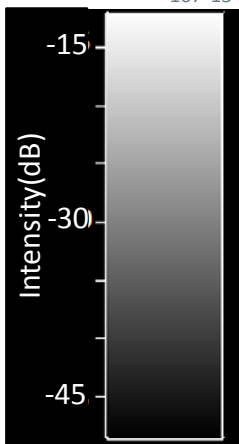
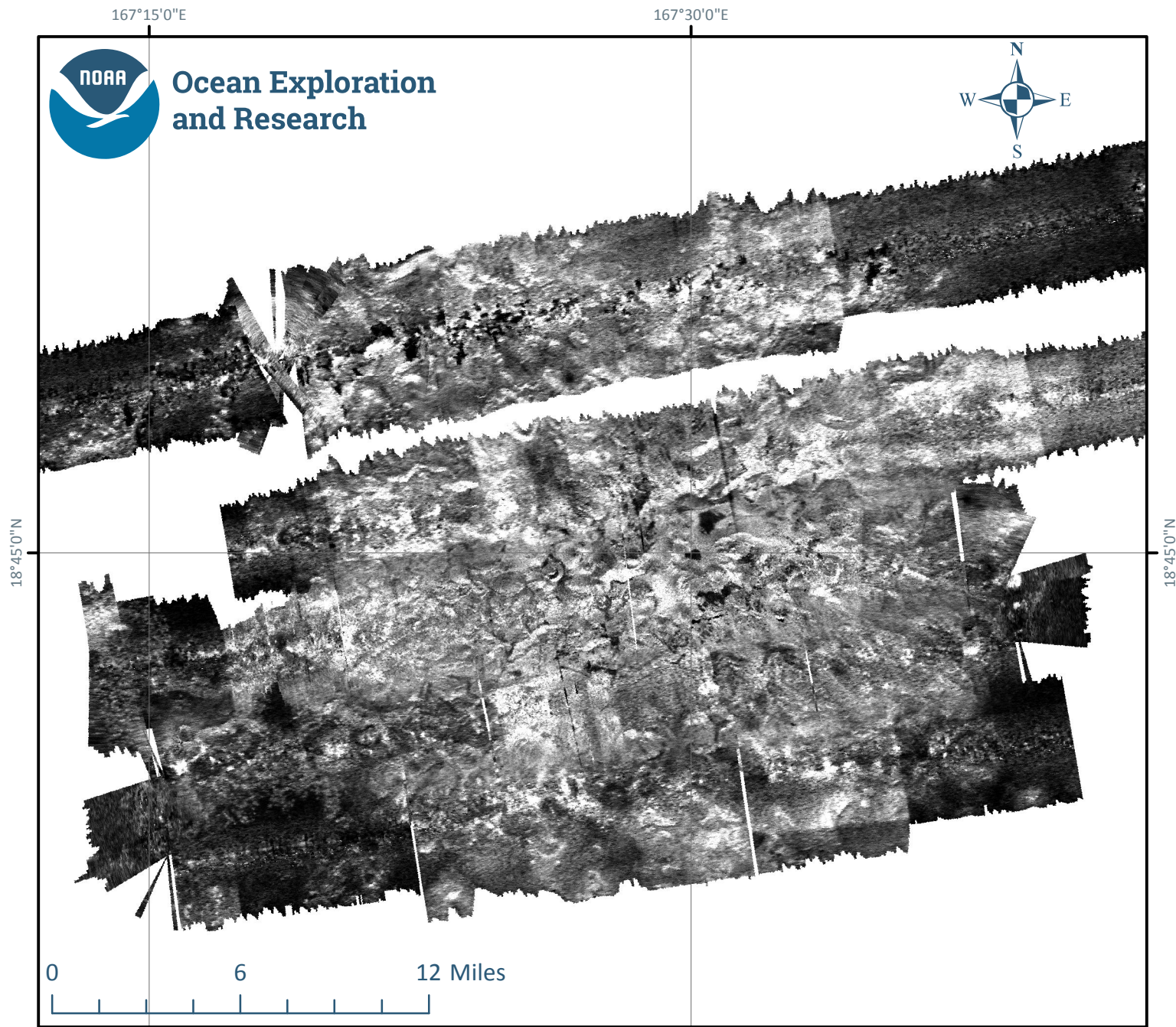
- EX1607_093_SBP
- EX1607_094_SBP
- EX1607_095_SBP
- EX1607_096_SBP
- EX1607_097_SBP
- EX1607_098_SBP

Data Source: NOAA Ship Okeanos Explorer
Map Compiled By Chloe Baskin
Map Made In : ERSi ARC GIS

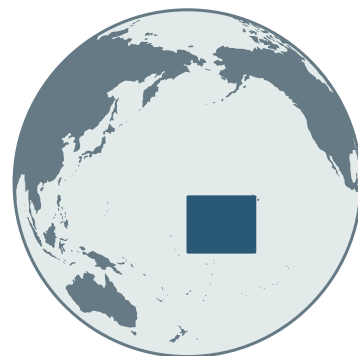


EX1607 NOAA Ship Okeanos Explorer: CAPSTONE

Wake Island Pacific Remote Islands Marine National Monument Seamount 4: Mosaic



Data Source: NOAA Ship Okeanos Explorer
Map Compiled By Chloe Baskin
Map Made In : ERSi ARC GIS

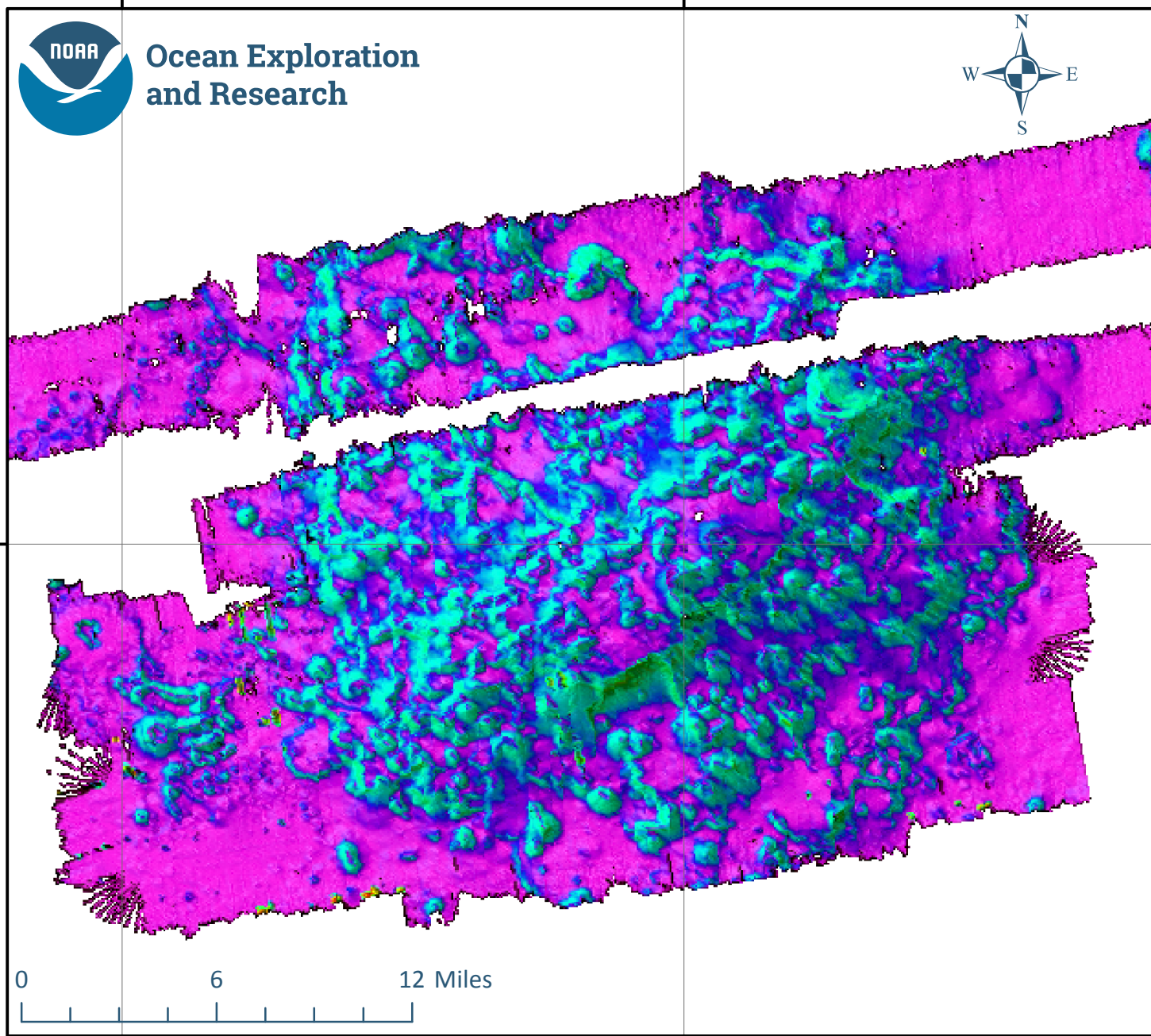


EX1607 NOAA Ship Okeanos Explorer: CAPSTONE

Wake Island Pacific Remote Islands Marine National Monument Seamount 4: Slope Bathymetry

167°15'0"E

167°30'0"E



18°45'0"N

18°45'0"N

0 6 12 Miles

167°15'0"E

167°30'0"E

Data Source: NOAA Ship Okeanos Explorer
Map Compiled By Chloe Baskin
Map Made In : ERSi ARC GIS

