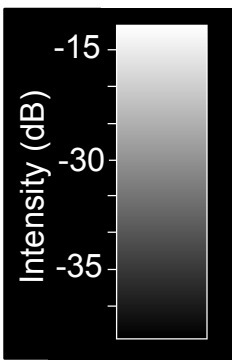
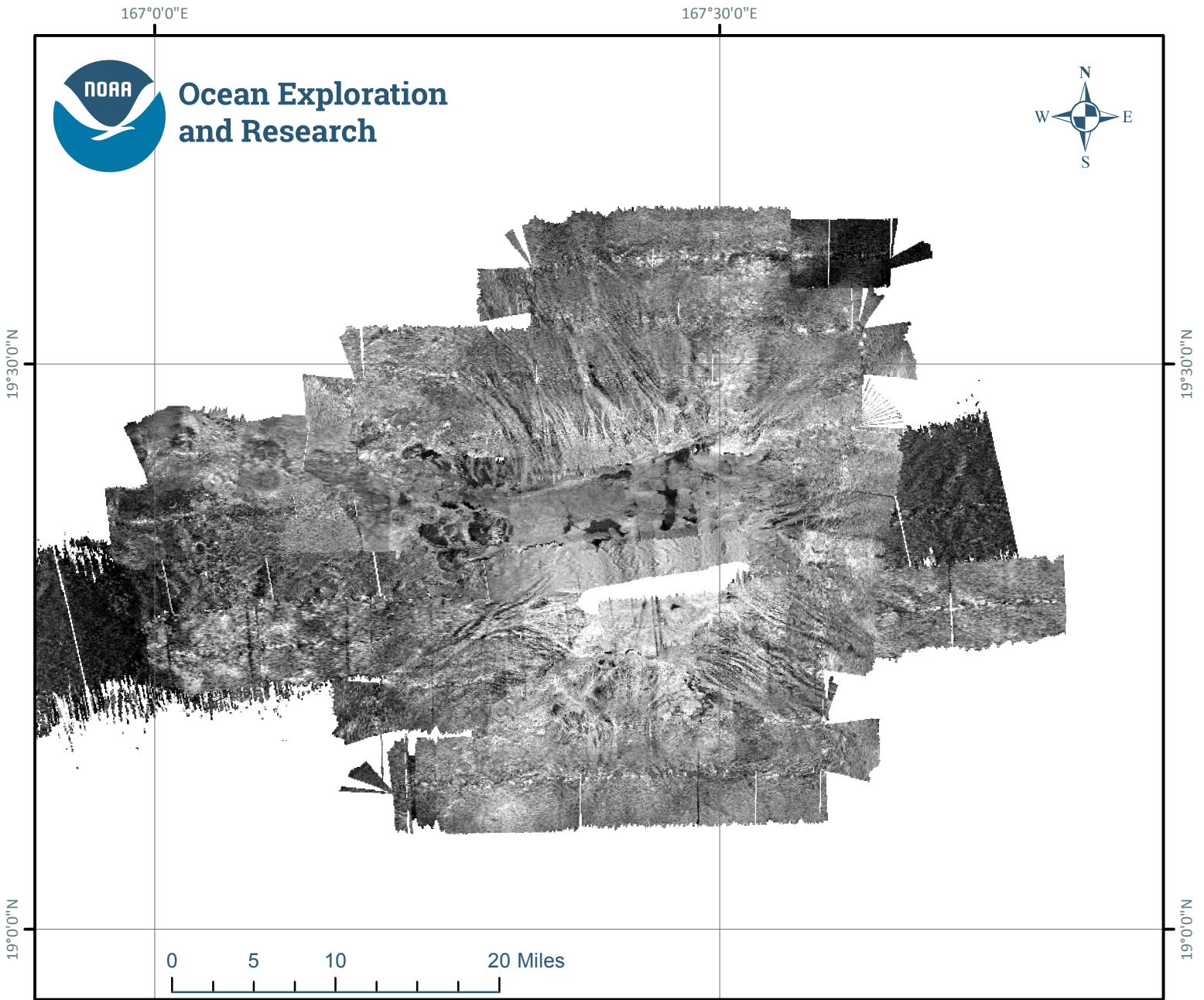
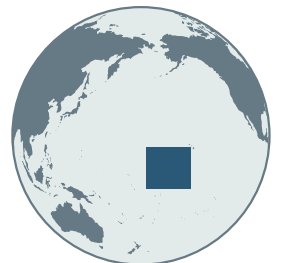


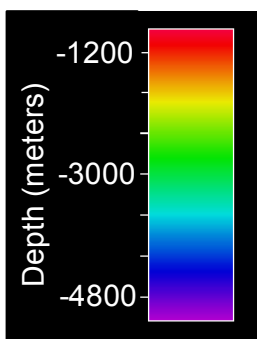
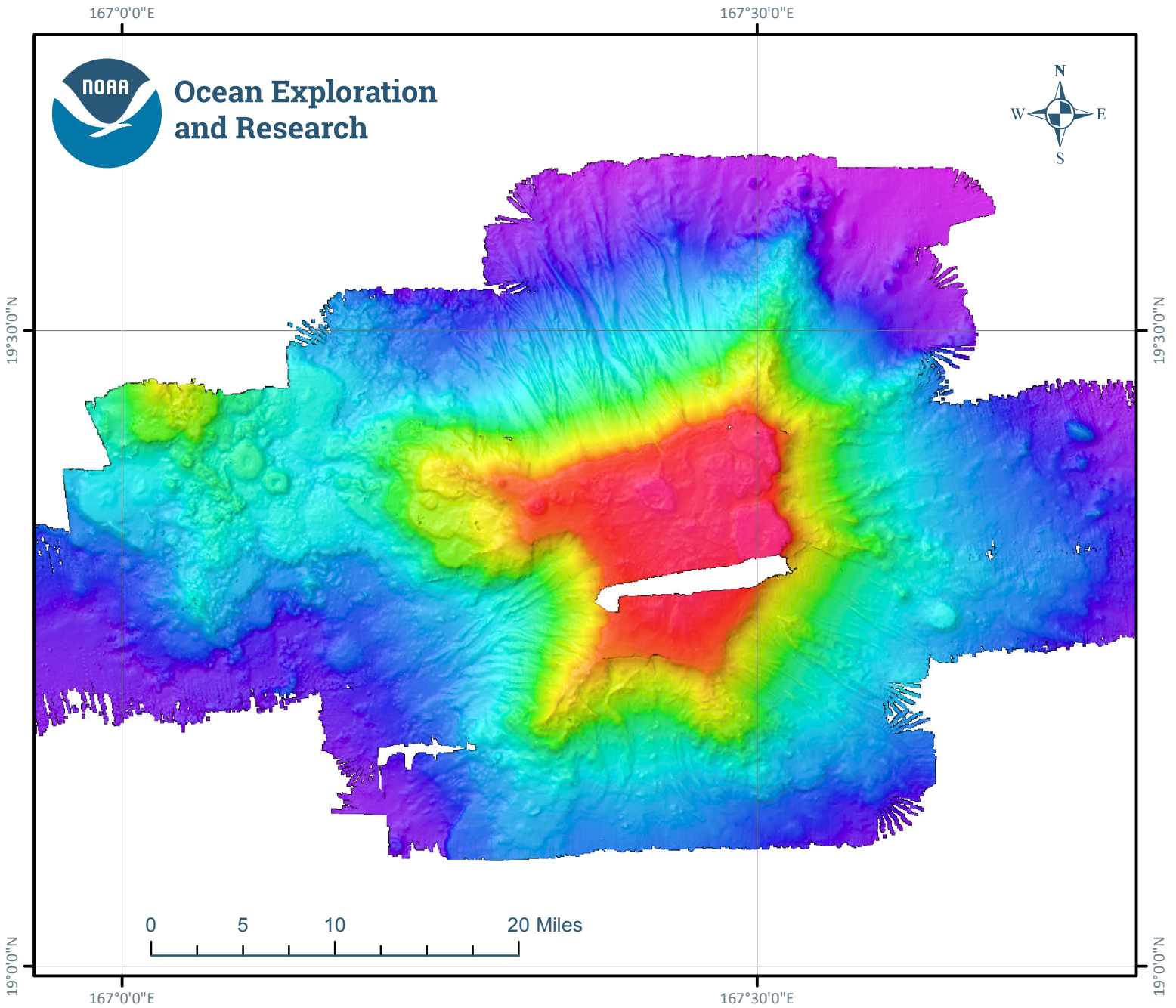
EX1607: 2016 CAPSTONE Wake Island Pacific Remote Islands Marine National Monument Seamount 5 Backscatter Mosaic



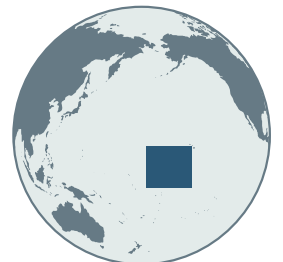
Data Source: NOAA Ship Okeanos Explorer
Map compiled by: Caroline Cooper
Map made in: ESRI ARC GIS



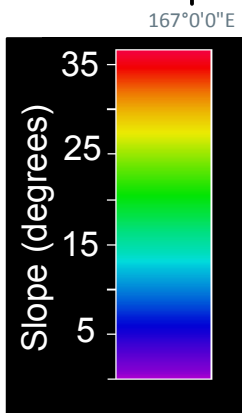
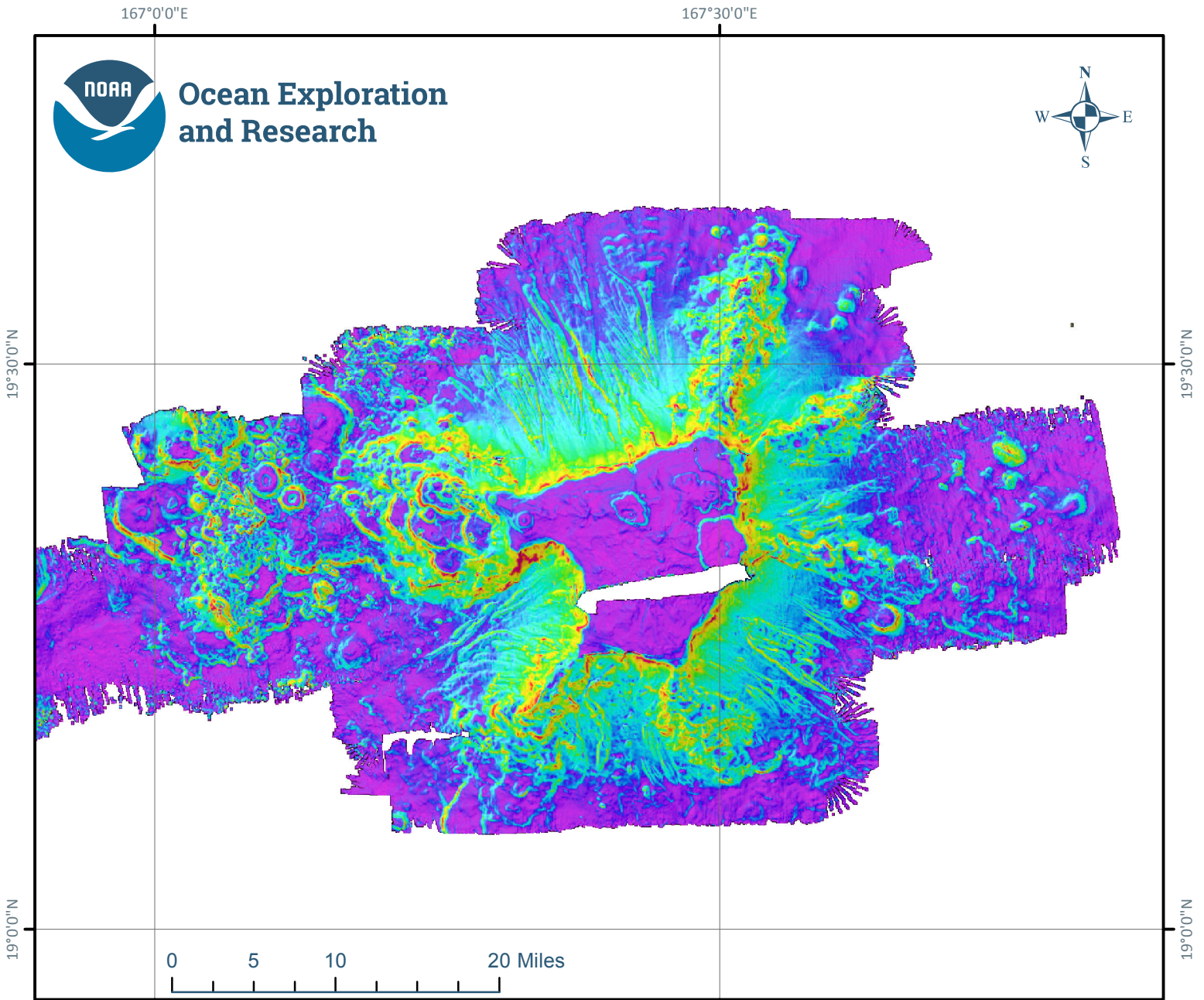
EX1607: 2016 CAPSTONE Wake Island Pacific Remote Islands Marine National Monument Seamount 5 Bathymetry



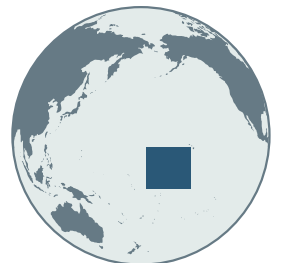
Data Source: NOAA Ship Okeanos Explorer
Map compiled by: Caroline Cooper
Map made in: ESRI ARC GIS



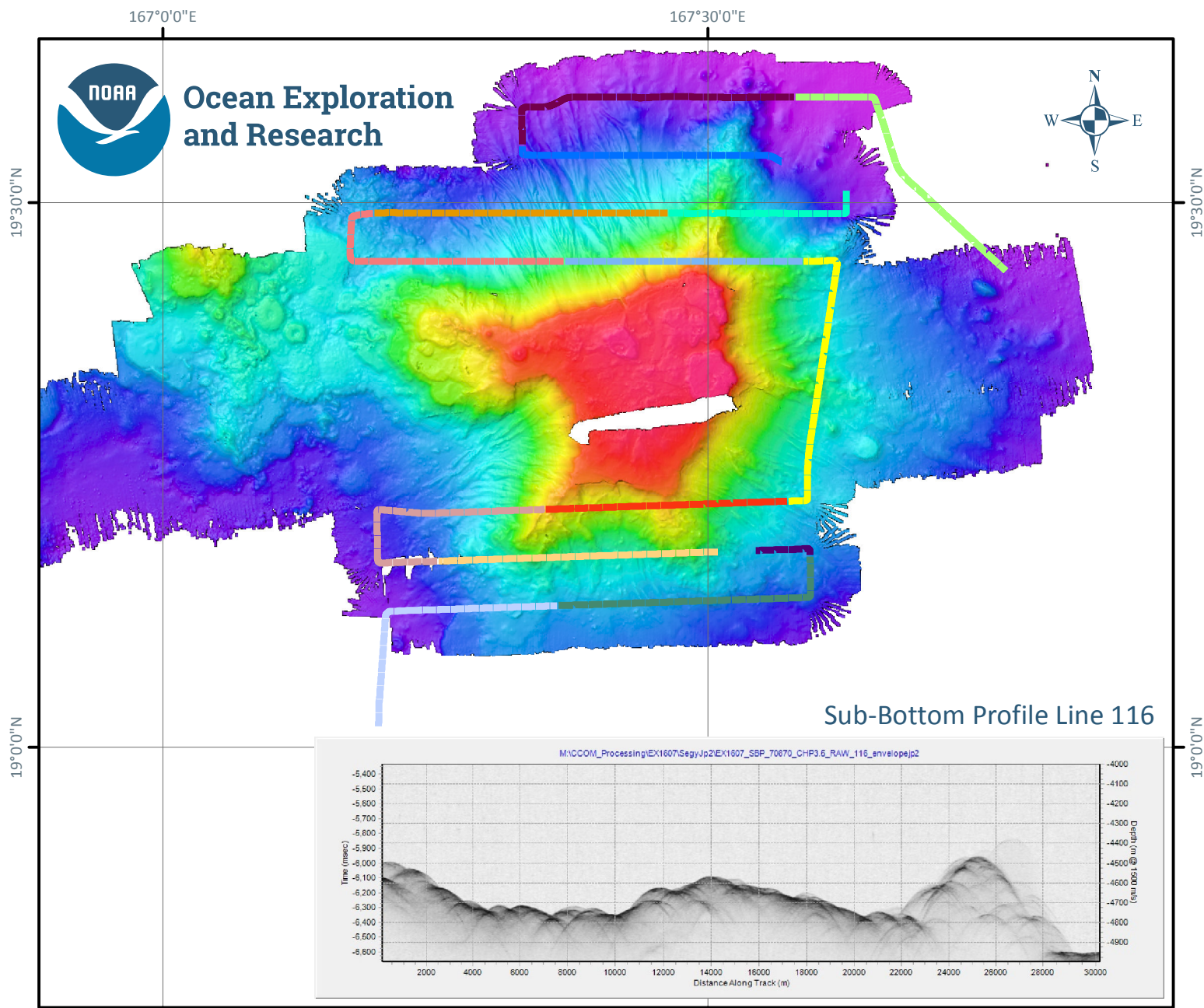
EX1607: 2016 CAPSTONE Wake Island Pacific Remote Islands Marine National Monument Seamount 5 Slope Bathymetry



Data Source: NOAA Ship Okeanos Explorer
Map compiled by: Caroline Cooper
Map made in: ESRI ARC GIS

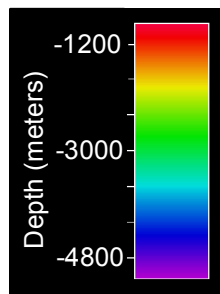


EX1607: 2016 CAPSTONE Wake Island Pacific Remote Islands Marine National Monument Seamount 5 Bathymetry and Sub-Bottom Profiler Data



Legend

- | | | | | | |
|--|----------------|--|----------------|--|----------------|
| | EX1607_SBP_104 | | EX1607_SBP_110 | | EX1607_SBP_116 |
| | EX1607_SBP_105 | | EX1607_SBP_111 | | EX1607_SBP_117 |
| | EX1607_SBP_106 | | EX1607_SBP_112 | | |
| | EX1607_SBP_107 | | EX1607_SBP_113 | | |
| | EX1607_SBP_108 | | EX1607_SBP_114 | | |
| | EX1607_SBP_109 | | EX1607_SBP_115 | | |



Data Source: NOAA Ship Okeanos Explorer
Map compiled by: Caroline Cooper
Map made in: ESRI ARC GIS

